

# HARMONIZING WATER & TECH



INCLUSIVE WATER ACCESS  
IN BATUR GEOPARK





# THE ORIGINATORS

NADA



RAIHAN

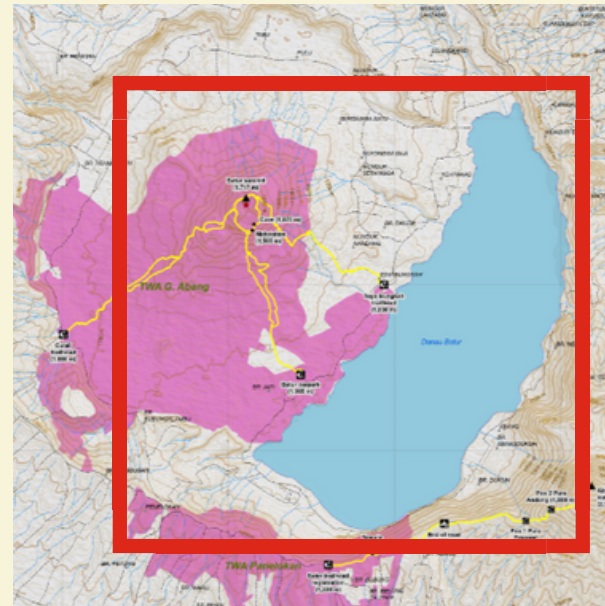


RIZKI





## CASE STUDY LOCATION



**BATUR GEOPARK, BANGLI REGENCY, NORTHEAST BALI, INDONESIA**

## MAIN BENEFICIARY



**LOCAL PEOPLE WHO LIVE IN BANGLI REGENCY AND RELY ON LAKE BATUR AS THEIR SOURCE OF LIFE, SUCH AS FARMERS.**

## OUR PURPOSE



### CAUSES

#### LACK OF PUBLIC AWARENESS

AGRICULTURE ON THE SLOPES AROUND THE LAKE

COMMUNITY WASTE

#### LACK OF WATER QUALITY MANAGEMENT

INADEQUATE SYSTEM AND TECHNOLOGY CAPACITY

### MAIN PROBLEM

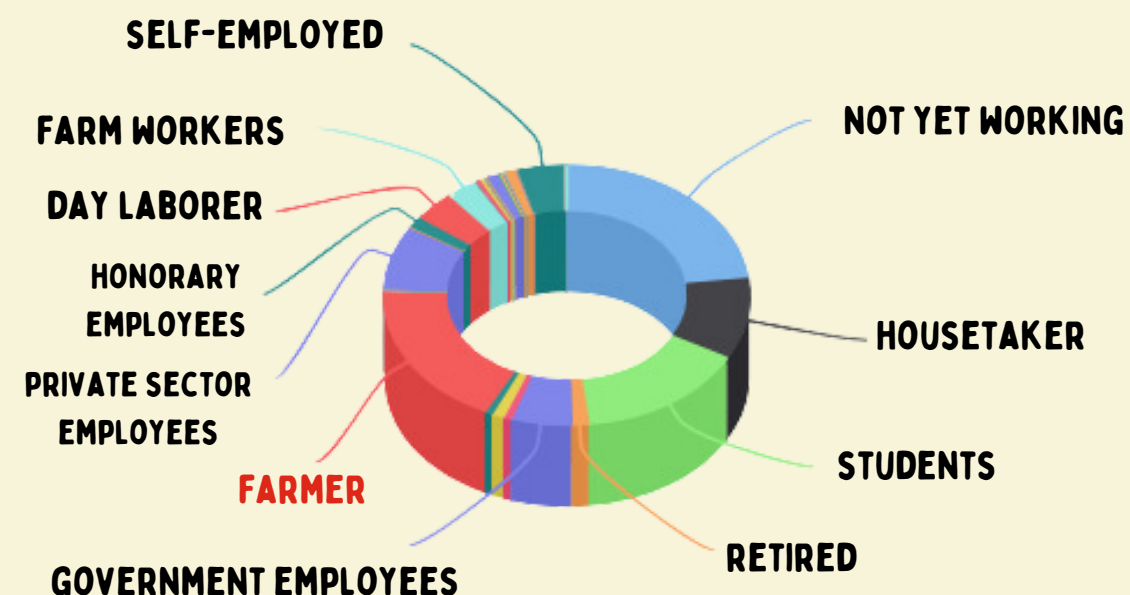
**POLLUTED WATER IN LAKE BATUR**

### CONSEQUENCES

NOT HAVING ENOUGH SAFE AND CLEAN WATER

PLANT DISEASES & SOIL CONTAMINATION

Source : Susut Desa Statistics 2024



Based on STORET analysis, the water quality of Lake Batur is categorized as polluted (Tismayuni, 2013).

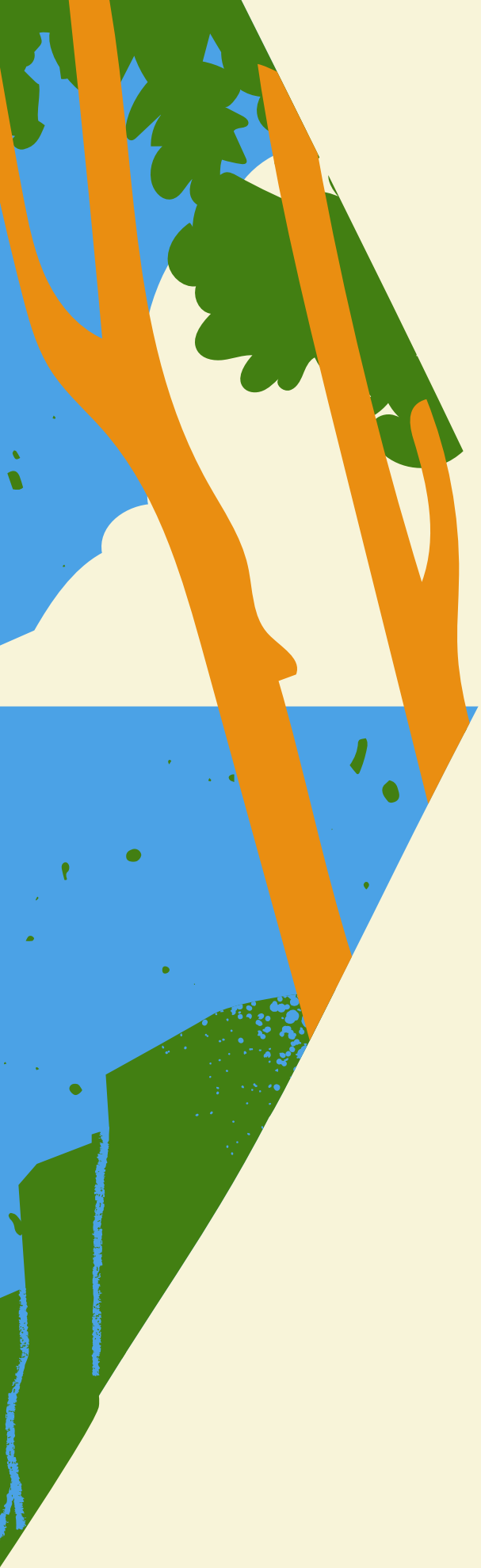


# PROBLEM STATEMENT



*Lake Batur, with significant potential as a clean water source for nearby regions, is currently polluted, primarily due to agricultural activities, **accounting for 85% of the contamination**. Hence, we prioritize agricultural reform to address this issue. **Through local wisdom**, we aim to raise environmental awareness among communities. Additionally, we plan to employ renewable energy technology, **utilizing Lake Batur's potential as a floating solar power plant**, to mitigate the pollution and generate electricity sustainably.*





SHORT TERM  
SOLUTION



LONG TERM  
SOLUTION



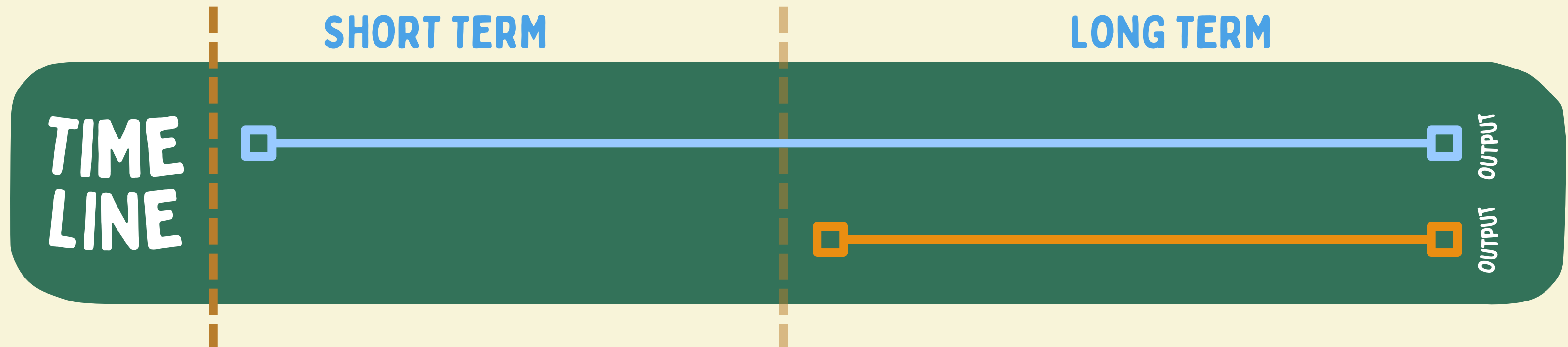




# CRITERIA AND BOUNDARIES FOR OUR IDEA

- 1. Effectiveness
- 2. Feasibility
- 3. Sustainability
- 4. Timeliness

- 1. Cultural Sensitivity
- 2. Environmental impact





# SHORT TERM SOLUTION



*Spreading Awareness with Local Wisdom to develop integrated solutions.*

## SOCIALIZATION TO LOCAL COMMUNITIES WITH THE CONCEPT OF TRI HITA KARANA : PALEMAHAN

*"Yeh dane pacang dados angga ring widang."*

*We want local community realize on the importance of water resiliency with the local wisdom approach.*

## INCREASING AWARENESS : EVERY HOUSE SHOULD HAVE WATER RESERVE

*"Yening ring setiap kumah pacang dados ngelah yeh."*

*Collaborate with local communities to establish water reserves at the household level.*

## WORKSHOP & TRAINING

*Utilize the output from Long Term Solution: Renewable Energy from Floating Solar System*





# LONG TERM SOLUTION

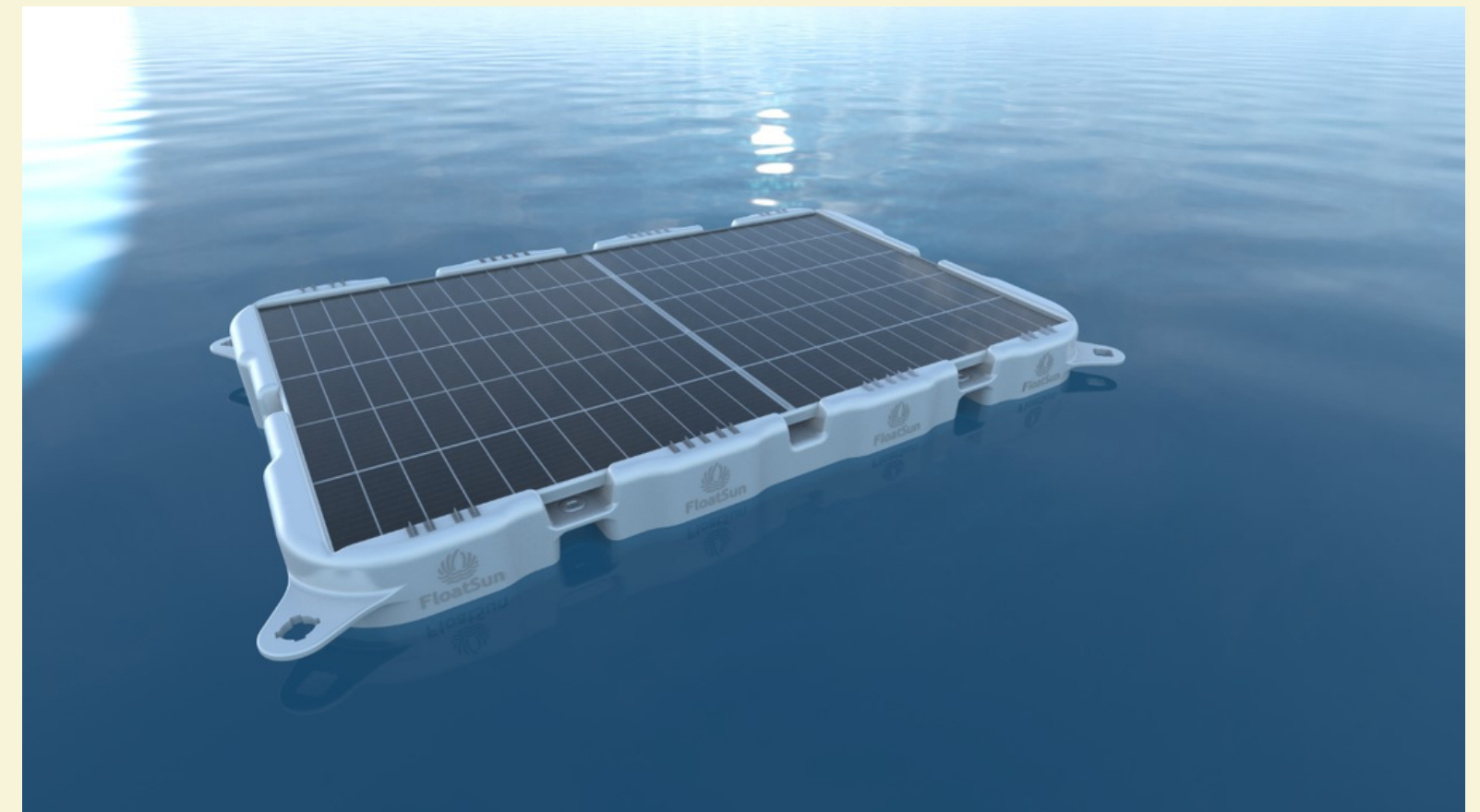
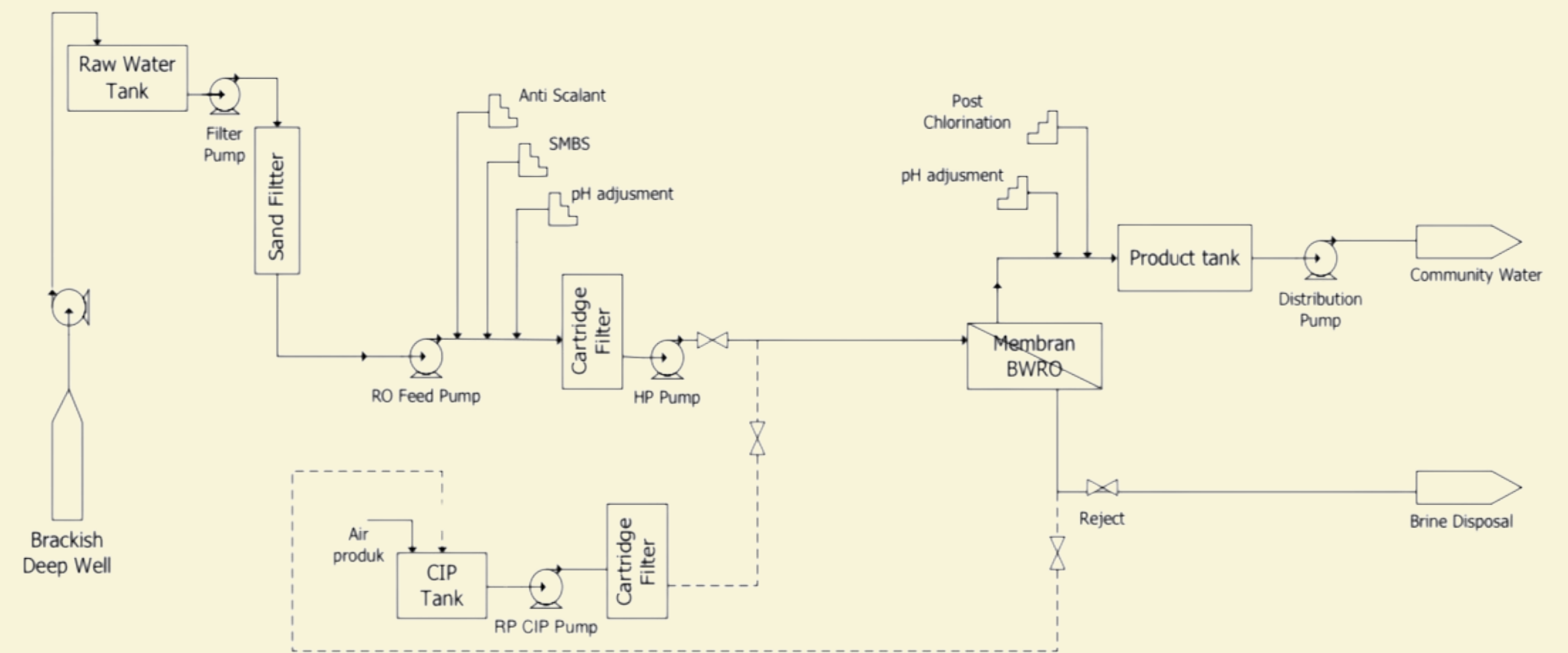
*Escalate the Functions of BWRO with Renewable Technology*

## INCREASE BWRO'S CLEAN WATER PROSSESING CAPACITY

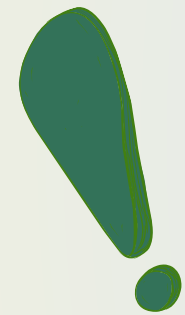
*Create a BWRO process with **higher clean water capacity** to fulfil the needs of local communities.*

## ALLOCATE SOLAR ENERGY INSTRUMENTS FROM LAND TO LAKE

*Build a **floating solar energy system** on Lake Batur to increase the reverse osmosis work of BWRO and renewable energy source for local residents.*







## OUR THINKING PROCESS

### DEFINE

1. STATE THE AREA
2. IDENTIFY THE PROBLEM
3. UNDERSTAND CAUSES & CONSEQUENCES
4. ADDRESS THE BENEFICIARY

### IDEATE

1. CREATE THE CRITERIA & BOUNDARIES
2. OFFER SOLUTIONS AND DETAILED EXPLANATION
3. SUMMARIZE

**THANK YOU!**

